

# Penn Yan Municipal Board Special Meeting Minutes

---

March 28, 2019

**I. Attendees:** Chairman Rom French, Commissioners Dan Banach, Ray Hamilton, David Payne and Lee Sackett, Director of Public Works Brent Bodine, Mayor Leigh MacKerchar and Village Trustee Dan Condella

**II. Call to Order** at 9:00 a.m.

**III. Executive Session:**

**MOTION to move into Executive Session at 9:00 a.m. to discuss the work history of an employee with Rom French, Lee Sackett, Dan Banach, Ray Hamilton, David Payne, Leigh MacKerchar, Brent Bodine, Dan Condella and Crystal Bailey; first Dan Banach, seconded by Dave Payne; carried.**

*Lee Sackett left meeting at 9:52 a.m.*

*Leigh MacKerchar left meeting at 9:55 a.m.*

**MOTION to exit Executive Session at 9:57 a.m.; first Dan Banach, seconded by Dave Payne; carried.**

**IV. Adjournment:** 9:58 a.m.

---

*Crystal Bailey 3/28/19*

## Wastewater Operations December 2018

**Cherry Street Pump Station:** The 100 hp pump from cherry street pump station is at Emerick Associates. It is being evaluated for repair estimate.

**Primary Clarifiers:** The free demo unit for the Wet Well Wizard came to a conclusion. The introduction of air and agitation provided supplemental dissolved oxygen ahead of the primary clarifiers. Also the formation of the mat of thick grease and solids material was prevented until further around the clarifier. The benefit to this is that the VAC truck can easily reach the side of the clarifiers where this was forced to occur. Use of the VAC truck around the entire clarifier perimeter is limited to summer months when the grass and ground is dry, due to the weight of the vehicle. By using the air agitation, the grease and floating material form within easy reach of the VAC truck, without having to drive onto the grass.

**Reed Beds:** Bed #1 was utilized briefly to pour digested sludge into while trying to identify the reason for inconsistent sludge feed to the press. It was suspected there might be a possible pipe blockage between the Anaerobic Digester and the Press Bldg.



**Press Sludge:** Dewatering Operation was plagued with sludge feed issues during the latter half of the month. The sludge line from Digester #2 to the sludge mix pump in the press building was flushed forwards and backwards. A small amount of sludge was directed to the reed bed #1 to visually see the flow, as previously reported. A thorough flushing of all plumbing, piping, and pumps revealed plastic debris that, once in the wastewater treatment plant does not break down, can cause problems with pumps and plugging.

**RBC:** The alarm system that was installed on each of the RBCs in November worked as designed. The VFD on RBC # 12 had tripped out in the middle of the night, triggering the alarm. During response to that alarm, the VFDs on RBCs, #8, 9, and 10 were flashing warning codes. Temperature readings revealed 146 F, 149 F, and 153 F respectively. All other temps were found to also be elevated. Visual observation of the biomass growth indicated an increase in weight plus high incoming flows of 3.0 MGD were recorded for that day. The RBCs are designed to rotate against the direction of the flow and for design flows levels of 1.8 MGD. Immediate response was to reduce the speed of each of the RBCs accordingly and monitor temperatures. After the flows returned to normal, the temperatures also returned to normal (<120 F).

After the last settleable solids violation, a sample of the final clarifier floc was sent for microscopic analysis. The results indicate a filamentous organism was the primary component. These filaments are very long (comparatively) and buoyant which is why they don't settle very well. We will begin a treatment regime which will consist of a chlorine maintenance dose at the head of the RBCs to combat the Filaments.

**Basement conduit installation:** The Digester valve position light indicator was modified from temporary to permanent. Electrical conduit and wires were run from basement valve housing to the main lobby status light bar. Further work needs to be done with regards to providing source power to the actuator and termination hookups once the actuator is installed.

# Penn Yan Municipal Board Special Meeting Minutes

March 28, 2019

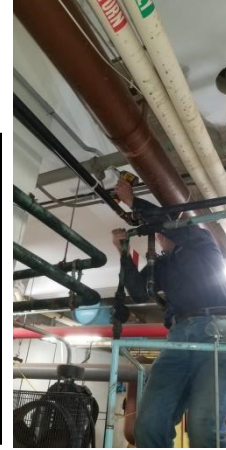


Status light Bar



Digester Valve  
Open Status  
Indicator  
light

Conduit  
runs  
difficult  
install  
among the  
many pipes



Electrical conduit and wires were also run to provide permanent electrical plug-in connections for each of the two facility hot water heat recirculation pumps. These have been connected to temporary extension cords that were draped around the overhead piping in the basement. Finalization of this project will be done soon.

# Penn Yan Municipal Board Special Meeting Minutes

March 28, 2019

## Wastewater Treatment Plant

2018 December

Yards Compost Screened	47	Gallons poured to Reed Bed	6,525
Gallons Sludge Dewatered ( Pressed)	186,161	Pressed tons Dewatered	97
Tons Dewatered Sludge to Landfill	54	Landfill Haul \$ Tip Cost	\$3,292
Gallons Septage Received	143,076	Septage Revenue	\$7,869

